

Children and Young People's Overview and Scrutiny Committee

2 April 2015



Quarter 3 2014/15 Performance Management Report

Report of Corporate Management Team Lorraine O'Donnell, Assistant Chief Executive Councillor Simon Henig, Leader

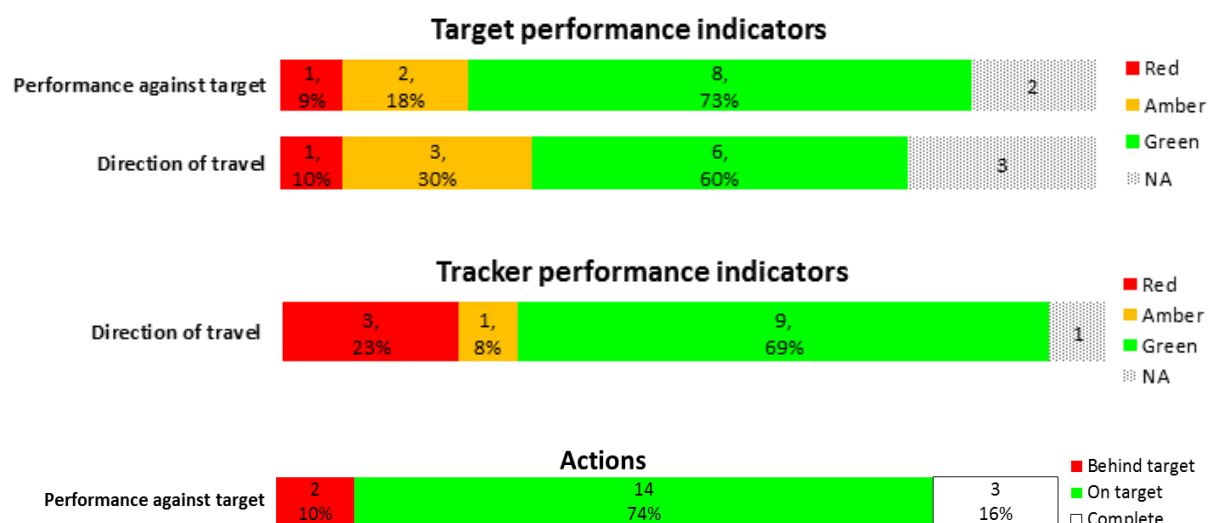
Purpose of the Report

1. To present progress against the council's corporate basket of performance indicators for the Altogether Better for Children and Young People theme and report other significant performance issues for the third quarter of 2014/15 covering the period October to December 2014.

Background

2. The report sets out an overview of performance and progress for the Altogether Better for Children and Young People priority theme. Key performance indicator progress is reported against two indicator types which comprise of:
 - a. Key target indicators – targets are set for indicators where improvements can be measured regularly and where improvement can be actively influenced by the council and its partners (see Appendix 3, table 1); and
 - b. Key tracker indicators – performance will be tracked but no targets are set for indicators which are long-term and/or which the council and its partners only partially influence (see Appendix 3, table 2).
3. The report continues to incorporate a stronger focus on volume measures in our performance framework. This allows us to better quantify productivity and to monitor the effects of reductions in resources and changes in volume of activity. Charts detailing some of the key volume measures which form part of the council's corporate basket of performance indicators are presented in Appendix 4.

Altogether Better for Children and Young People: Overview



Council Performance

4. Key achievements this quarter include:

- a. Confirmation of high levels of educational achievement. Final data for the 2013/14 academic year show that 57.6% of pupils achieved five or more A*-C GCSEs or equivalent including English and maths. Durham's performance is better than the national (56.6%) and North East (54.6%) averages. There has been a change in GCSEs from September 2013 in that a pupil's first entry in a particular subject will count towards performance figures when before their best result counted, as many pupils sat exams more than once. In 2014 a significant number of qualifications which had previously counted towards the attainment of five or more A*-C GCSEs are no longer eligible. This means that past data is not comparable. In terms of A levels, final data for the 2013/14 academic year indicate that 98.7% of pupils achieved two A levels at grade A*-E (level 3) or equivalent. This is achieving the target of 98.5% and is better than the 2013/14 academic year national (98%) and regional (98.4%) averages. Performance is similar to 98.9% in the previous year.
- b. The achievement gap between pupils eligible for pupil premium and pupils not eligible is narrowing. Final data for the 2013/14 academic year show that 84.9% of Durham pupils not eligible for pupil premium funding achieved level 4 in reading, writing and maths at key stage 2 compared to 69% of pupils eligible for pupil premium funding, which resulted in an achievement gap of 15.9 percentage points (ppts). The gap has narrowed from 21ppts in the previous year and is in line with the 2013/14 academic year national performance of 16ppts. 67.5% of Durham pupils not eligible for pupil premium funding achieved five A*-C GCSEs including English and maths at key stage 4 compared to 38.3% of pupils eligible for pupil premium funding, which resulted in an achievement gap of 29.2 ppts. This gap has narrowed slightly from 30 ppts in the previous year.
- c. Final data for the 2013/14 academic year indicate that 56.7% of pupils in the early years foundation stage achieved a good level of development, which is a significant improvement from 41.9% in the previous year. Performance is better than the 2013/14 academic year averages for the North East and

statistical neighbours, both of which are 56%. National performance is 60% and the gap between Durham and the national rate has narrowed from ten ppts to three ppts.

- d. The Stronger Families Programme aims to assist individual(s) in a family achieve reductions in crime/anti-social behaviour, improved school attendance or moving back into employment as set out in the Department for Communities and Local Government's Troubled Families Programme Financial Framework (March 2012). As of October 2014, 932 families have had a successful intervention, which equates to 70.6% of County Durham's overall target of 1,320 families by May 2015. This has resulted in £841,800 of payment by results claims.
- e. The percentage of children in need referrals occurring within 12 months of the previous referral has reduced from 30.4% last year to 23.5% this period and is at the lowest level since 2012/13. The level is also now in line with national and regional levels (see Appendix 4, Chart 1).
- f. Tracker indicators show:
 - i. Data for October to December 2014 indicate that 6.5% of 16 to 18 year olds were not in education, employment or training (NEET), which relates to approximately 1,018 young people. This is an improvement when compared to the same quarter of 2013 (7%) and is better than the North East (7.6%) and statistical neighbours (6.6%) averages for November 2013 to January 2014 (national measuring period) but worse than the national figure (5.3%). The percentage of 16 to 18 year olds whose status in relation to education, employment or training is not known was 4.4% at December 2014. This is better than the November 2013 to January 2014 averages for England (9.2%), North East (6.4%) and statistical neighbours (6.4%).
 - ii. The latest provisional quarterly under 18 conception rate data for July to September 2013 show the County Durham rate was 22 per 1,000 population (48 conceptions), which is a significant decrease from 31.8 during the corresponding period of the previous year and is the lowest number of conceptions during an individual quarter since monitoring commenced in 1998. The rate in County Durham is lower than the national (22.2), North East (26.2) and statistical neighbour (28.8) averages for July to September 2013.
 - iii. At 31 December 2014 there were 611 looked after children, which equates to a rate of 61 per 10,000 population. There has been a slight rise from 59.8 at the same point of the previous year, but Durham's rate is lower than the March 2014 averages for the North East and statistical neighbours (both 81) but slightly higher than the England rate (60) (see Appendix 4, Chart 2).
 - iv. At 31 December 2014 there were 360 children subject to a child protection plan, which equates to a rate of 35.9 per 10,000 population and is a reduction from 44.9 at the same point in the previous year. Performance is lower than the March 2014 England (42.1), North East (59.3) and statistical neighbour averages (54.8).

5. The key performance improvement issues for this theme are:

- a. Between April and December 2014, 248 out of 260 child protection cases were reviewed within timescale (95.4%). Performance is comparable with the same period in the previous year (95.5%) and is better than the 2013/14 England (94.6%) and statistical neighbour averages (94.9%). However it is lower than the regional average (96.8%) and has failed to achieve the target of 100%. During the most recent quarter (October to December 2014) all 182 reviews that were held were within the agreed timescale.
- b. Tracker indicators for the 2013/14 academic year show that 23.8% of children in reception (aged 4-5) were overweight or obese, which is an increase from 21.9% in the previous year. This is better than the North East (24.4%) and statistical neighbour (24.6%) averages but is higher than the national rate (22.5%). At Year six (aged 10-11), 36.1% of children were overweight or obese, which is a marginal increase from 35.9% in the previous year. This is consistent with the North East performance (36.1%) but is higher than national (33.5%) and statistical neighbour (35.2%) averages.

Childhood obesity is a complex public health priority for which there is no single solution. It therefore requires multiple layers of interventions to address the trend of increasing weight in our child population. At a countywide level this includes: continuing to tackle the social determinants of health such as income inequality and poverty, as there are strong links between poverty and access to healthy, affordable food; reducing the prevalence of fast food takeaways; and continuing to improve the built environment to increase the amount of safe cycle ways and pedestrian routes. Actions taking place to reduce childhood obesity include:

- i. The County Durham Healthy Weight Framework was implemented in November 2014 and is monitored through the multi-agency Healthy Weight Alliance. The framework sets out the strategic direction and actions to be undertaken over the coming years by all partners.
 - ii. Public Health continues to support schools to deliver against the national School Food Plan and works in partnership with schools to increase physical activity opportunities for young people.
 - iii. Public Health agreed the new contract with County Durham and Darlington Foundation Trust (CDDFT) in January 2015 to deliver the expanded Family Initiative Supporting Child Health programme as part of children's wellbeing. CDDFT will now recruit family health trainers to work with families who have children identified as overweight on issues such as food menus, budgeting skills and behaviour change plans.
- c. The key Council Plan actions which have not achieved target in this theme include:
 - i. Development of an integrated approach across the council to enable communities and individuals to optimise their health and life opportunities has been amended from September 2014 to September 2015 to align with the timescales within the Joint Health and Wellbeing Strategy.

- ii. Adopting the council's approach to determining the distribution and range of fixed play equipment across the county has been delayed to allow for further consultation with regard to the impacts of the report.

6. There are no key risks in delivering the objectives of this theme.

Recommendation and Reasons

- 7. That the Children and Young People's Overview and Scrutiny Committee receive the report and consider any performance issues arising there from.

Contact:	Jenny Haworth, Head of Planning and Performance
Tel:	03000 268071
E-Mail	jenny.haworth@durham.gov.uk

Appendix 1: Implications

Finance - Latest performance information is being used to inform corporate, service and financial planning.

Staffing - Performance against a number of relevant corporate health PIs has been included to monitor staffing issues.

Risk - Reporting of significant risks and their interaction with performance is integrated into the quarterly monitoring report.

Equality and Diversity / Public Sector Equality Duty - Corporate health PIs are monitored as part of the performance monitoring process.

Accommodation - Not applicable

Crime and Disorder - A number of PIs and key actions relating to crime and disorder are continually monitored in partnership with Durham Constabulary.

Human Rights - Not applicable

Consultation - Not applicable

Procurement - Not applicable

Disability Issues - Employees with a disability are monitored as part of the performance monitoring process.

Legal Implications - Not applicable

Appendix 2: Key to symbols used within the report

Where icons appear in this report, they have been applied to the most recently available information.

Performance Indicators:

Direction of travel

Latest reported data have improved from comparable period

GREEN

Latest reported data remain in line with comparable period

AMBER

Latest reported data have deteriorated from comparable period

RED

Performance against target

Performance better than target

Getting there - performance approaching target (within 2%)

Performance >2% behind target

Actions:

WHITE

Complete (Action achieved by deadline/achieved ahead of deadline)

GREEN

Action on track to be achieved by the deadline

RED

Action not achieved by the deadline/unlikely to be achieved by the deadline

Benchmarking:

GREEN

Performance better than other authorities based on latest benchmarking information available

AMBER

Performance in line with other authorities based on latest benchmarking information available

RED

Performance worse than other authorities based on latest benchmarking information available

Appendix 3: Summary of Key Performance Indicators

Table 1: Key Target Indicators

Ref	PI ref	Description	Latest data	Period covered	Period target	Current performance to target	Data 12 months earlier	Performance compared to 12 months earlier	National figure	*North East figure **Nearest statistical neighbour figure	Period covered
Altogether Better for Children and Young People											
17	CASCYP 15	Percentage of children in the early years foundation stage achieving a good level of development	57	2013/14 ac yr	48	GREEN	42	GREEN	60	56** GREEN	2013/14 ac yr
18	CASCYP6	Achievement gap between Durham pupils eligible for pupil premium and Durham pupils not eligible for pupil premium funding achieving level 4 in reading, writing and maths at key stage 2 (percentage points)	15.9	2013/14 ac yr	20.5	GREEN	21.0	GREEN	16.0 GREEN		2013/14 ac yr
19	CASCYP4	Percentage of pupils achieving five or more A*-C grades at GCSE or equivalent including English and maths	57.6	2013/14 ac yr	NA	NA [1]	Definition change	NA [1]	56.6 GREEN	54.6* GREEN	2013/14 ac yr
20	CASCYP7	Achievement gap between Durham pupils eligible for pupil premium and Durham pupils not eligible for pupil premium funding achieving five A*-C GCSE's including English and maths at key stage 4 (percentage points)	29.2	2013/14 ac yr	29.5	GREEN	30.0	GREEN			

Ref	PI ref	Description	Latest data	Period covered	Period target	Current performance to target	Data 12 months earlier	Performance compared to 12 months earlier	National figure	*North East figure **Nearest statistical neighbour figure	Period covered
21	CASCYP5	Percentage of pupils on level 3 programmes in community secondary schools achieving two A levels at grade A*-E or equivalent	98.7	2013/14 ac yr	98.5	GREEN	98.9	AMBER	98.0 GREEN	98.4* GREEN	2013/14 ac yr
22	CASCYP2	Percentage of looked after children achieving five A*-C GCSEs (or equivalent) at key stage 4 (including English and maths)	11.6	2013/14 ac yr (provisional)	NA	NA [1]	Definition change	NA [1]			
23	CASAS5	First time entrants to the youth justice system aged 10 - 17 (per 100,000 population of 10-17 year olds) (Also in Altogether Safer)	358	Apr - Dec 2014 (provisional)	511	GREEN	365	GREEN			
24	CASCYP8	Percentage of mothers smoking at time of delivery	19.9	Jul - Sep 2014	20.5	GREEN	19.1	RED	11.5 RED	18.1* RED	Apr - Sep 2014
25	CASCYP 12	Percentage of child protection cases which were reviewed within required timescales	95.4	Apr - Dec 2014	100.0	RED	95.5	AMBER	94.6 GREEN	96.8* RED	2013/14
26	CASCYP9	Percentage of children in need referrals occurring within 12 months of previous referral	23.5	Apr - Dec 2014	28.0	GREEN	30.4	GREEN	23.4 RED	22.9* RED	2013/14
27	CASCYP 13	Parent/carers satisfaction with the help they received from Children's Services	66.7	Apr - Dec 2013	72.0	AMBER	67.9	AMBER			
28	CASCYP	Percentage of successful	70.6	Apr 2012 -	65.0	GREEN	23.6	Not	72.3	78.4*	As at Oct

Ref	PI ref	Description	Latest data	Period covered	Period target	Current performance to target	Data 12 months earlier	Performance compared to 12 months earlier	National figure	*North East figure **Nearest statistical neighbour figure	Period covered
	14	interventions via the Stronger Families Programme		Oct 2014				comparable [2]	RED	RED	2014
29	CASCYP 11	Percentage of looked after children cases which were reviewed within required timescales	97.5	Apr - Dec 2014	97.8	AMBER	96.6	GREEN			

[\[1\] Due to changes to the definition data is not comparable](#)

[\[2\] Data cumulative year on year so comparisons are not applicable](#)

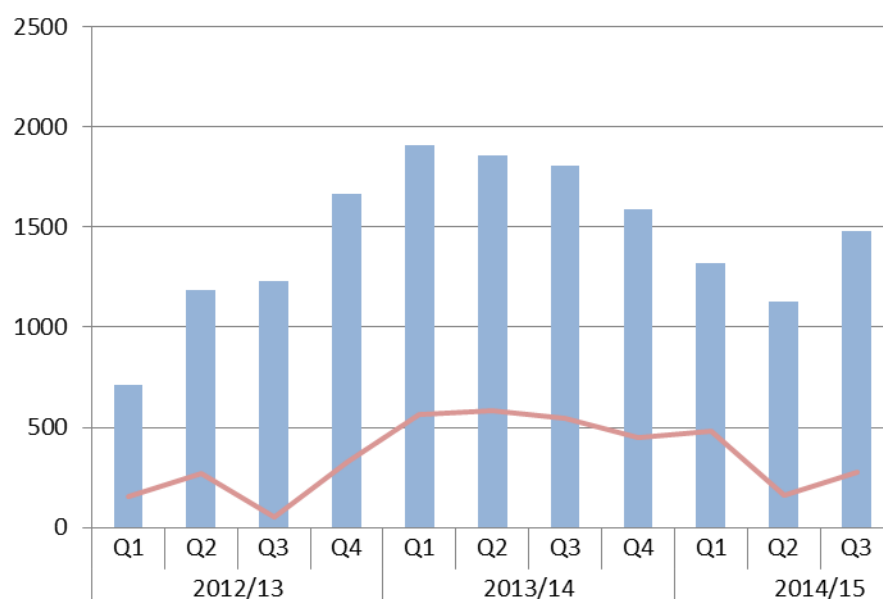
Table 2: Key Tracker Indicators

Ref	PI ref	Description	Latest data	Period covered	Previous period data	Performance compared to previous period	Data 12 months earlier	Performance compared to 12 months earlier	National figure	*North East figure **Nearest statistical neighbour figure	Period covered
Altogether Better for Children and Young People											
128	CAS CYP16	Percentage of 16 to 18 year olds who are not in education, employment or training (NEET)	6.5	Oct - Dec 2014	14.2	GREEN	7.0	GREEN	5.3 Not comparable	6.6** Not comparable	Nov 2013 - Jan 2014
129	ACE016	Percentage of children in poverty (quarterly proxy measure) (Also in Altogether Better Council)	23.3	As at May 2014	23.6	AMBER	24.4	GREEN	17.6 RED	24* GREEN	As at May 2014
130	ACE017	Percentage of children in poverty (national annual measure) (Also in Altogether Better Council)	22.7	2012	23.0	GREEN	23.0	GREEN	18.9 RED	23.4* GREEN	2012
131	CAS CYP29	Proven re-offending by young people (who offend) in a 12 month period	36.9	Jan - Dec 2012	37.1	GREEN	41.4	GREEN	35.6 RED		Jan - Dec 2012
132	CAS CYP18	Percentage of children aged 4-5 years classified as overweight or obese (Also in Altogether Healthier)	23.8	2013/14 ac yr	21.9	RED	21.9	RED	22.5 RED	24.6** GREEN	2013/14 ac yr
133	CAS CYP19	Percentage of children aged 10-11 years classified as overweight or obese (Also in Altogether Healthier)	36.1	2013/14 ac yr	35.9	AMBER	35.9	AMBER	33.5 RED	35.2** RED	2013/14 ac yr
134	CAS	Under 18 conception rate	22.0	Jul - Sep	38.9	GREEN	31.8	GREEN	22.2	26.2*	Jul - Sep

Ref	PI ref	Description	Latest data	Period covered	Previous period data	Performance compared to previous period	Data 12 months earlier	Performance compared to 12 months earlier	National figure	*North East figure **Nearest statistical neighbour figure	Period covered
	CYP20	per 1,000 girls aged 15-17		2013					GREEN	GREEN	2013
135	CAS CYP21	Under 16 conception rate per 1,000 girls aged 13 - 15	8.9	Jan - Dec 2012	7.7	RED	7.7	RED	5.6 RED	8.3** RED	Jan - Dec 2012
136	CAS CYP23	Emotional and behavioural health of looked after children	15.5	2013/14	16.1	GREEN	16.1	GREEN	14.0 RED	13.5** RED	2012/13
137	CAS CYP26	Young people aged 10-24 years admitted to hospital as a result of self-harm (rate per 100,000 population aged 10-24 years)	504.8	2010/11 - 2012/13	561.8	GREEN	561.8	GREEN	352.3 RED	532.2* GREEN	2010/11 - 2012/13
138	CAS CYP27	Number of new referrals to Child and Adolescent Mental Health Services (CAMHS)	1,952	Apr - Dec 2014	1,205	NA	1,705	NA			
139	CAS CYP28	Rate of children with a child protection plan per 10,000 population	35.9	As at Dec 2014	38.4	GREEN	44.9	GREEN	42.1 GREEN	54.8** GREEN	As at Mar 2014
140	CAS CYP24	Rate of looked after children per 10,000 population	61.0	As at Dec 2014	61.0	AMBER	59.8	RED	60.0 RED	81* GREEN	As at Mar 2014
141	CAS CYP25	Prevalence of breastfeeding at 6-8 weeks from birth	27.7	Oct - Dec 2014	29.2	RED	27.3	GREEN	47.2 RED	28.1* RED	2012/13 (England) Jul - Sep 2014 (NE - Durham Darlington and Tees area team)

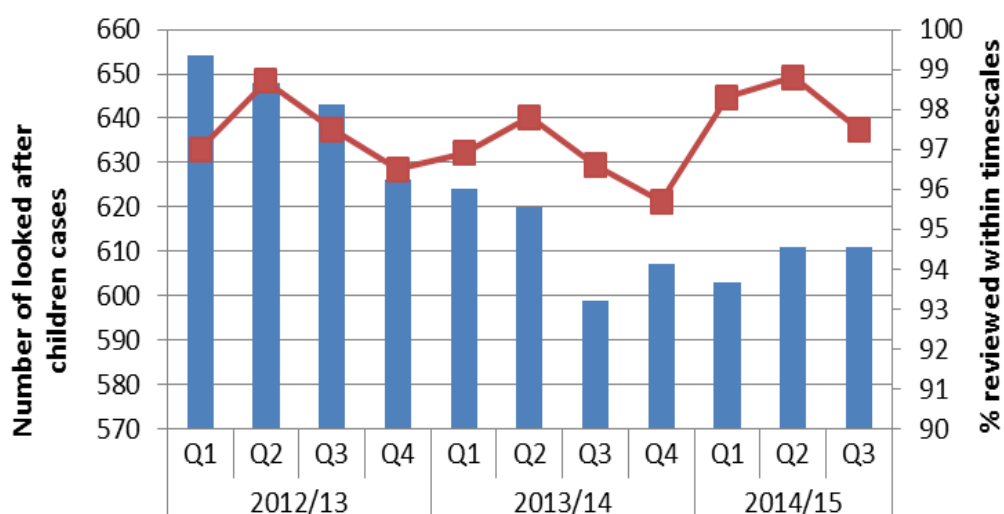
Appendix 4: Volume Measures Chart numbers

Chart 1 - Children in need referrals within 12 months of previous referral



Number of children in need referrals (quarterly)	710	1187	1232	1663	1911	1855	1807	1,590	1318	1130	1481
Number of Children in Need (CIN) referrals occurring within 12 months of previous referral (quarterly)	155	269	55	326	567	585	543	450	482	161	279

Chart 2 - Number of looked after children cases



Number of looked after children cases	654	648	643	626	624	620	599	607	603	611	611
% reviewed within timescales	97.0	98.7	97.5	96.5	96.9	97.8	96.6	95.7	98.3	98.8	97.5